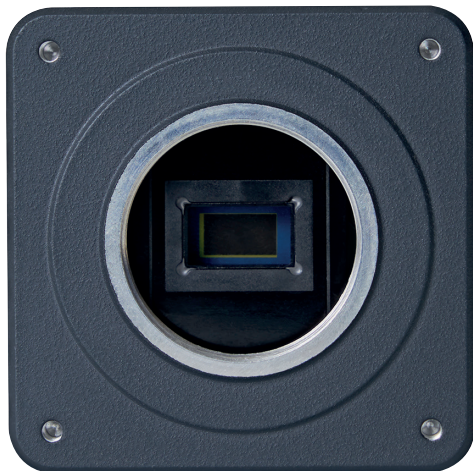




Quality of Light

# KC200SB1CX

Super Low Light HD-SDI Camera



**Sensor Type:** Single Chip CMOS

**Shutter:** Rolling Shutter

**Pixel Size and Resolution:** 1920 x 1080 / 2MP Color

**Scanning Method:** Progressive

**Format Size:** 1/1.8"

**Minimum Illumination:** 0.003lux (F1.4, 30fps, 50IRE, +84dB, Color)

IR Cut Filter Switch Function

Rear OSD Button

**Lens Mount:** CS-Mount

**Aperture Control:** DC Auto-Iris

**Video Output:** HD-SDI

RS485 Remote Control Function

WDR Mode

Flange Back Adjustment Function

**Power:** DC12V

**Weight:** 120g

*Kowa American Corporation*

20001 South Vermont Avenue, Torrance, CA 90502, U.S.A. | T: +1 (800) 966 5692 | E-mail: customerservice@kowa.com | www.kowavision.com

*Kowa Optimed Deutschland GmbH*

Fichtenstr. 123, 40233 Düsseldorf, Germany | T: +49 (0) 211 542184 00 | E-mail: vision@kowaoptimed.com | www.kowa-lenses.com

*Kowa Optronics Co., Ltd.*

2F Kudan Center Bldg. 4-1-7, Kudan-Kita, Chiyoda-Ku, Tokyo, 102-0073, Japan | T: +81 (3) 5651 7061 | E-mail: opt-cctv@kowa.co.jp | www.kowa.co.jp

*Kowa Skymech Pte. Ltd.*

11B Tuas Road, Jurong Industrial Estate, Singapore 638508 | T: +65 6862 6930 | E-mail: sales@skymech.com.sg | www.kowa-skymech.com