



Quality of Light



KC200SB1CX

Super Low-Light HD-SDI Camera

- High Sensitivity
- High Resolution
- Full-Color Day/Night
- Compact Design

Critical Infrastructure Security

In facilities such as seaports, rail yards, and substations, continuous full-color imaging in both day and night is essential for enhancing situational awareness and ensuring rapid, effective response.

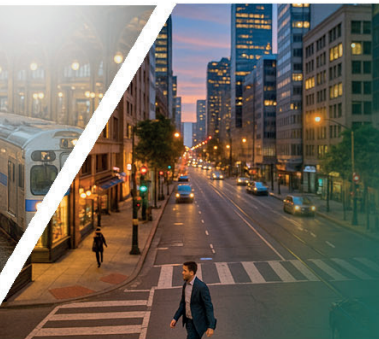
Transportation Hubs & Parking Structure

In airports, train stations, tunnels, and parking garages, where lighting is often variable or intentionally dim, reliable imaging is essential for safety and security.



Urban Surveillance & Smart Cities

Public safety systems benefit from color footage in areas with inconsistent lighting such as alleys, parks, and city streets, enabling facial recognition, license plate verification, and crowd monitoring even in low-light conditions.



Optimized Lens Pairings – Precision optics engineered for unmatched low-light clarity.

LMZ16160-IR	LMZ25300-IR	LMZ14500-IR	LMZ20750-XF	LMZ1000AMPDC	LM25JS5MA	LM35JS5MA	LM60JS5MA
Zoom Lens Series	Zoom Lens Series	Zoom Lens Series	Zoom Lens Series	Zoom Lens Series	JS5MA Lens Series	JS5MA Lens Series	JS5MA Lens Series
1"	1"	1/1.8"	1/1.8"	1/2"	1"	1"	1"
16-160mm	25-300mm	14-500mm	20-750mm	20-1000mm	25mm	35mm	60mm
F1.9-F22	F2.8-F360	F2.9-F360	F4.6-F360	F3.5-F78	F0.85-F360	F0.85-F360	F0.8-F360
C-Mount	C-Mount	C-Mount	C-Mount	C-Mount	CS-Mount	CS-Mount	CS-Mount
5MP	5MP	MP	2MP	2MP	5MP	5MP	5MP
Day & Night	Day & Night	Day & Night	XD Glass	XD Glass			
DC Auto-Iris or Motorized Iris	DC Auto-Iris or Motorized Iris	DC Auto-Iris	DC Auto-Iris	DC Auto-Iris			



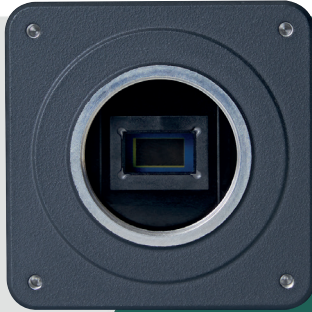
Quality of Light

KC200SB1CX

Super Low Light HD-SDI Camera

Manufactured in Japan

- | | |
|---|-----------------------------------|
| • Sensor Type: Single Chip CMOS | • Lens Mount: CS-Mount |
| • Shutter: Rolling Shutter | • Aperture Control: DC Auto-Iris |
| • Pixel Size and Resolution: 1920 x 1080 / 2MP Color | • Video Output: HD-SDI |
| • Scanning Method: Progressive | • RS485 Remote Control Function |
| • Format Size: 1/1.8" | • WDR Mode |
| • Minimum Illumination: 0.003lux (F1.4, 30fps, 50IRE, +84dB, Color) | • Flange Back Adjustment Function |
| • IR Cut Filter Switch Function | • Power: DC12V |
| • Rear OSD Button | • Weight: 120g |



ULTRA COMPACT DESIGN

The KC200SB1CX represents a major advance in design efficiency, delivering the full performance of the previous SC200PK1C model in a dramatically smaller form factor. With dimensions of just 50 x 50 x 45mm, the KC200SB1CX is approximately 84.5% smaller in volume than its predecessor (76 x 66 x 145mm). This reduction in size provides significant benefits, particularly in surveillance applications where there are space constraints.



SC200PK1C
76mm (W) x 66mm (H)
x 145mm (D)

NEW KC200SB1CX
50mm (W) x 50mm (H)
x 45mm (D)

84%

SMALLER

THAN PREVIOUS MODEL

FULL-COLOR IMAGING IN DARKNESS

The Kowa KC200SB1CX, with minimum illumination down to 0.003 lux, delivers full color images even in near-total darkness. Its advanced CMOS image sensor is optimized for low-light performance, enhancing sensitivity without the need for infrared (IR) illumination. Capturing color at night provides critical visual cues such as clothing, vehicle paint, and object identification that monochrome IR systems cannot capture. In surveillance and security applications, color footage greatly improves recognition of suspects, license plates, and identifying markers.



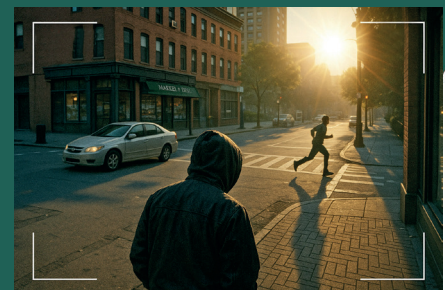
Standard CCTV Camera at 0:00AM



Kowa Super Low-Light Camera at 0:00AM

WIDE DYNAMIC RANGE

The advanced wide dynamic range (WDR) technology in the KC200SB1CX delivers exceptional image clarity in challenging lighting conditions such as strong backlighting, glare, or deep shadows. By intelligently balancing exposure across bright and dark areas in real time, the camera preserves critical details throughout the entire image, from sunlit windows to dimly lit corners. This is especially valuable in surveillance applications where key visual information, such as facial features or license plates, must remain visible and accurate regardless of lighting extremes. The enhanced WDR performance makes the KC200SB1CX ideal for environments like building entrances, lobbies, and parking structures where lighting conditions are constantly changing.



Kowa American Corporation

2001 South Vermont Avenue, Torrance, CA 90502, U.S.A. | T: +1 (800) 966 5692 | E-mail: customerservice@kowa.com | www.kowavision.com

Kowa Optimed Deutschland GmbH

Fichtenstr. 123, 40233 Düsseldorf, Germany | T: +49 (0) 211 542184 00 | E-mail: vision@kowaoptimed.com | www.kowa-lenses.com

Kowa Optronics Co., Ltd.

2F Kudan Center Bldg. 4-1-7, Kudan-Kita, Chiyoda-Ku, Tokyo, 102-0073, Japan | T: +81 (3) 5651 7061 | E-mail: opt-cctv@kowa.co.jp | www.kowa.co.jp

Kowa Skymech Pte. Ltd.

11B Tuas Road, Jurong Industrial Estate, Singapore 638508 | T: +65 6862 6930 | E-mail: sales@skymech.com.sg | www.kowa-skymech.com